



**Fall 2020**

# BACK TO SCHOOL

Re-Opening Plan  
*for Parents and Students of St. Joseph's School*



**ST. JOSEPH'S**  
CATHOLIC SCHOOL

# WELCOME BACK!

St. Joseph's School Building Reopening Committee worked together using guidance from the Archdiocese, the Center for Disease Control (CDC), the Minnesota Department of Health (MDH), the American Academy of Pediatrics, and other experts to create a Pandemic Preparedness Response Plan (PPRP) that supports our community in remaining safe and healthy while providing a learning environment, fostering faith formation and academic excellence this year.

## A PHASED APPROACH TO RE-OPENING

1

### TRADITIONAL LEARNING PLAN PLUS+

- *Health risk of COVID-19 has ended.*
- *Pre-COVID plan with learned enhancement.*
- *Better use of technology and adaptability to meet broader student needs.*
- *No students are utilizing remote learning.*

2

### TRADITIONAL LEARNING PLAN – With Less Restrictions

- *Significant decline or threat locally with COVID-19 such that additional restrictions loosened.*
- *Some students that were utilizing remote learning now return to school.*

3

### CURRENT PLAN – Modified Traditional Learning (as described)

- *Most students are in the building learning daily – some students are utilizing remote learning.*

4

### HYBRID PLAN – With Additional Restrictions

- *Huge increase in COVID-19 which requires additional restrictions and modification, but does not completely close the school for any extended time.*
- *Some students that were utilizing remote learning now return to school.*

5

### REMOTE LEARNING PLAN – Short and Long Term from Home

- *Evidence of widespread community spread of COVID-19 or decision from Archdiocese that necessitate moving all students to remote learning.*
- *Students learning through synchronous (live-streamed) and asynchronous (recordings, assignments and resources) methods.*



St. Joseph's School will implement a multi-phased approach to schooling. We remain committed to in-person, in-school education of our students, and are currently in Phase 3 of Re-Opening, which is described as a "Modified Traditional Learning" model.

We recognize the need to remain flexible should circumstances in school and/or Minnesota change, such that there is minimal disruption to the learning experience of our students. School protocols and procedures will be modified and updated as necessary during the school year.



*the school day*

# AT-A-GLANCE

## SCHOOL BEGINS

Monday, August 31, 2020 (Grades 1-6)

Tuesday, September 1, 2020 (Grades 7-8)

Wednesday, September 2, 2020 (Kindergarten)

Tuesday & Wednesday, September 8-9 (Preschool)

## ARRIVAL AND DEPARTURES

K-8 students will be dropped off in the morning at two staggered times in the East Parking Lot (back parking lot) based upon the first letter of their last name:

- A-K 8:20-8:30am
- L-Z 8:30-8:40am

Students will enter the building through designated entries by grade:

- Grades K-1 Door #15 (Kindergarten Hallway)
- Grades 2-5 Door #13
- Grades 6-8 Door #11 (Gymnasium Entrance)
- Those arriving by ISD 197 bussing (if provided), will enter the building through Door #6 (Seminole Entrance).

Students will be dismissed with a similar staggered schedule in the East Parking Lot (back parking lot.)

- A-K 2:40-2:50pm
- L-Z 2:50-3:00pm

We ask that parents stay in their car, follow directions, avoid congregating, and be prepared to arrive and leave campus as efficiently as possible.



## REMOTE LEARNING

Remote learning will be available to students who need to learn remotely due to health conditions or other circumstances (extended absence, family issues, etc.). Families may freely choose Remote Learning as the best option for their children with the option of changing learning models after October 14, 2020, and at other designated times during the school year.

## TRANSPORTATION

No transportation plans have been finalized with ISD 197. For this reason, families will need to proceed as if no transportation is available.

As additional information is provided, we will evaluate our current schedule.

## VISITORS, PARENTS AND VOLUNTEERS

St. Joseph's School will strictly limit the number of visitors.

- All visitors, including parents, will be required to follow our protocols including: wearing a mask, sanitizing their hands, completing a health questionnaire, and having their temperature taken.
- Opportunities for 'no-contact' drop-offs and pickups will be promoted.
- Creative options to engage parents sharing time and talents will be further explored.

## LUNCH PROGRAM

- All students and staff should bring their own lunches to be eaten primarily in classrooms or outside.
- Hot lunch is currently scheduled to be provided by ISD 197 after 9/14.

## RECESS

- Opportunities for active play are very important for students.
- Children will attend recess with their homeroom class in designated playground zones.
- Playground structures will not be used during the initial re-opening of school.
- Face coverings will be optional during this time.

*our commitment*

# HEALTH AND SAFETY

St. Joseph's School is committed to the overall health and safety of both our students and staff.

## OUR COMMITMENT



### TEMPERATURE SCREENINGS

*All students will have temperature monitored at home and upon arrival.*



### HAND WASHING

*There will be increased opportunities for hand washing throughout the day*



### FREQUENT SANITATION

*Hand sanitizer will be placed at all entrances, classrooms, and throughout the building.*



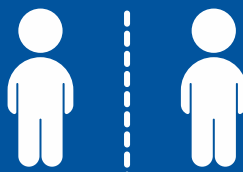
### NURSING STAFF

*A certified school nurse will be managing onsite the health and wellness of students every day.*



### RESPIRATORY ETIQUETTE

*Teachers will regularly review coughing and sneezing etiquette.*



### SOCIAL DISTANCING

*Students will be instructed on social distancing expectations.*



### STUDENTS WITH SYMPTOMS

*The school and families will follow defined protocol for symptoms.*

## FACE COVERINGS

- Per the Governor's Executive Order, all employees must wear a cloth covering or face shield.
- Students (preschool-8) are required to wear cloth face coverings/shields as they enter and exit the building and in all common spaces.
- Students (K-8) will wear face coverings in classrooms. Teachers will look for opportunities throughout the day to provide no-mask experiences such as lunch, recess, PE, outdoor classroom, etc.
- Face coverings must be clean, cover the mouth and nose completely, and must be appropriate for our school setting and not a distraction to others.

## HEALTH AND SCREENING PROTOCOLS

- Families are required to complete a daily Home Screening for each of their children and take their temperature prior to arriving in the morning.
- Staff will also check temperatures as students arrive at school. Any student with a temperature of 100.4 or higher will be required to go home.

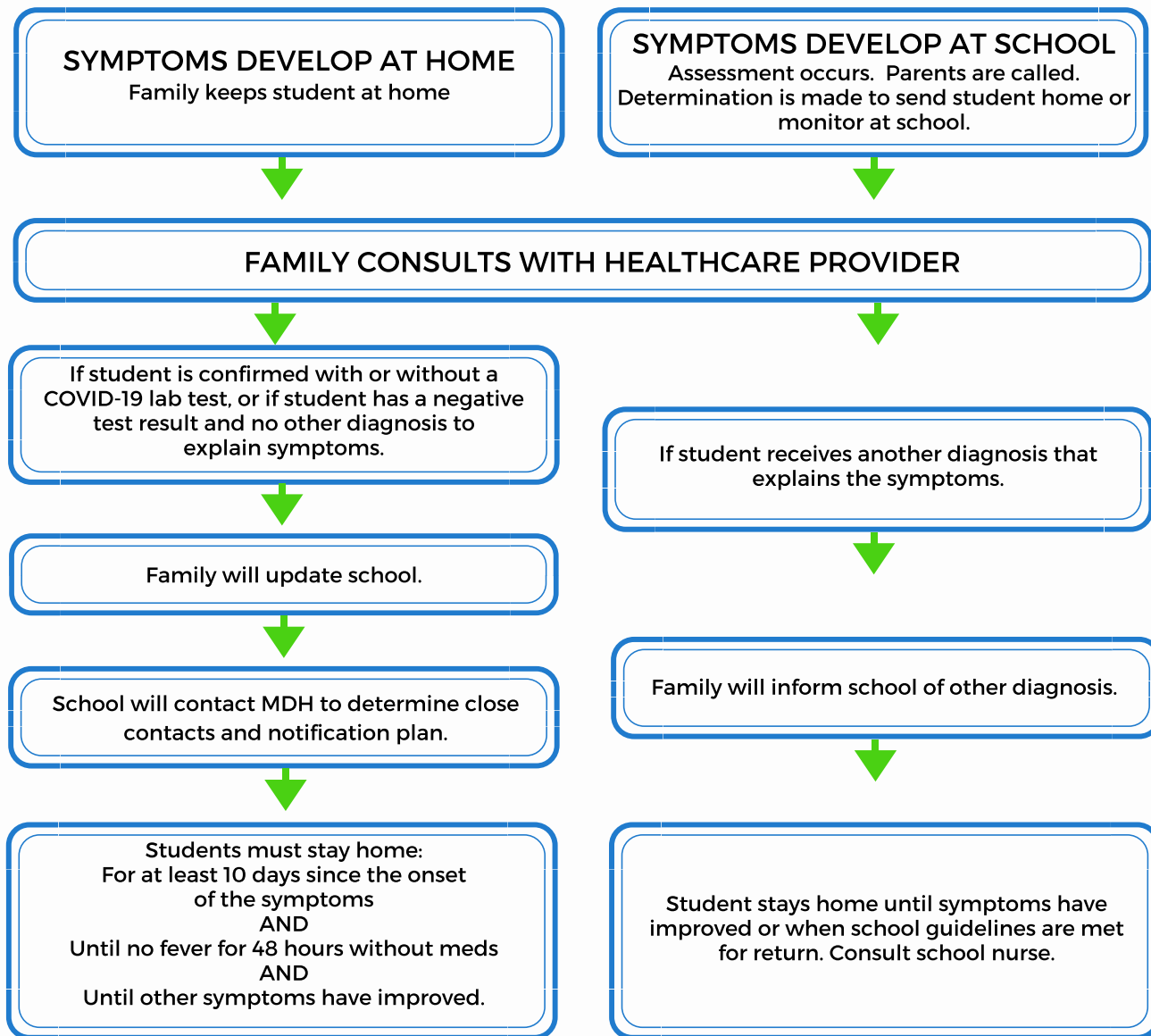




*what if*

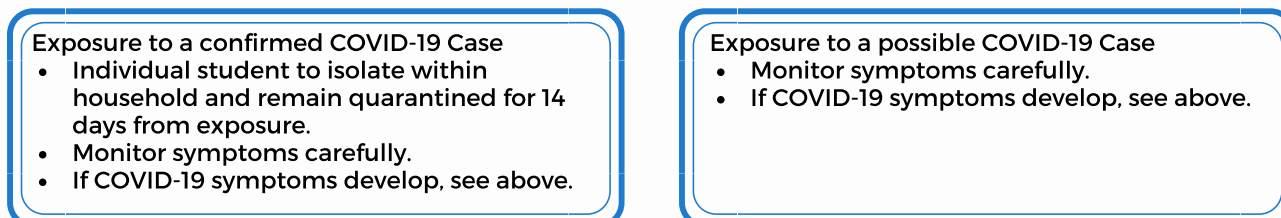
## A STUDENT HAS COVID-19 SYMPTOMS

Child presents with ONE of the following: New onset cough or shortness of breath, OR  
At least TWO of the following: fever of 100.4° or higher, chills, muscle pain, sore throat, loss of taste/smell, gastrointestinal symptoms of diarrhea, vomiting, or nausea.



## A STUDENT HAS EXPOSURE TO CONFIRMED CASE

Exposure: To have been within 6 feet of an ill person (with or without wearing a face covering) within 48 hours of symptoms onset, OR living in the same household as an ill person.



*putting policies into practice*

# THE CLASSROOM EXPERIENCE

- In-person classes will begin on Monday, August 31 for students in grades K-8 and on Monday, September 8 for preschool (with orientation on September 1-3).
- K-8 teachers will be using Google Meet to video conference and to allow students to synchronously participate in classes remotely from home as needed.
- Classroom arrangements have been altered to allow for extra space between desks at all grade levels.
- We will minimize the amount of any transition between classrooms, where most teachers and specialists will come into the classrooms to teach, thus, avoiding congestion in the hallways.
- Students will use their own school supplies limiting shared use of materials.
- Most large gatherings will be modified and restructured to include virtual participation for students and parents whenever possible.
- Weather-permitting, teachers will be allowed to provide instruction outside to students.
- Off-campus fields trips will be restricted this fall.



## MAINTAINING HEALTHY FACILITIES

- The building will be cleaned and disinfected according to CDC guidelines throughout the day.
- A disinfecting process for desks and high-touch areas will occur whenever a different group of students transition to particular classrooms.
- Evening protocols will be enhanced; routine cleaning requirements will be documented.
- All grade desk/tables will be disinfected at the end of each day.
- Non-permeable dividers will be placed in areas where it is difficult to maintain appropriate social distancing.
- Weather-permitting, doors and windows will remain open to improve airflow; ceiling fans will be regularly utilized to provide additional air circulation in the classrooms.

**REMEMBER TO ADD  
THESE ITEMS TO YOUR  
SHOPPING LIST:**



**THERMOMETER**



**PERSONAL  
WATER BOTTLE**



**MASK OR  
FACE COVERING**



*final notes*

# FAITH COMMUNITY

**There is no greater time for our school to find strength and courage in our Catholic faith.**

- Daily prayer in each classroom will continue to focus our days during these challenging times.
- School Mass will be live-streamed into each classroom during the initial reopening of school, as we plan for staff and students to attend Mass in Church in smaller groups over time.
- Plans are being developed for K-5 students to safely participate in the Catechesis of the Good Shepherd program after the school year has successfully started.
- Opportunities for the Sacrament of Reconciliation and visits to Perpetual Adoration will be made available in smaller groupings.



## SOCIO-EMOTIONAL HEALTH

- Our social/emotional health team (counselor, nurses, and administration) will proactively support our students, parents and staff whether learning in the class or at home.
- Staff will participate in ongoing training for meeting the unique mental health needs of students and families, and themselves, during this time.

## COMMUNICATION

We are committed to providing clear, ongoing communication to our families. We know you appreciate and deserve it.

- We have created a designated space on the school website for updates related to COVID-19.
- An update will be sent each week specific to our COVID-19 practices and protocols as a part of our regular Friday e-letter.
- We are still finalizing an alert communication system to contact parents if we need to implement a school shut down or alternative learning plan quickly.



# ST. JOSEPH'S CATHOLIC SCHOOL

1138 Seminole Avenue  
West St. Paul, Minnesota 55118

[stjosephwsp.org](http://stjosephwsp.org) |  
651-457-8550

## OUR MISSION STATEMENT

*"St. Joseph's Catholic School educates students through faith formation, academic excellence, and the development of virtue to be disciples of Christ."*