

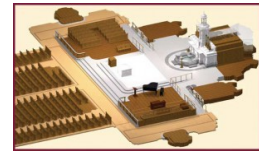
# Why We Need Your Support, Now More Than Ever

Thank you for your generous support this past fiscal year that ended on August 31<sup>st</sup>. We know these are challenging times for many parishioners. You should know your continued generosity especially since the COVID-19 crisis began has made a tremendous difference. You might ask, "Does the parish really need my gift? Does my weekly financial contribution make any difference? What are the parish's expenses?" Without your support we simply would not be the vibrant parish community that we are today. Our operating expense budget for the fiscal year that started on September 1<sup>st</sup> is \$2.42 million. Below is a breakdown of our budgeted expenses and the ways your support is needed and does make an impact. We need your increased financial support in the coming year through your Sunday offertory, maintenance 2<sup>nd</sup> collection, and Christmas and Easter gifts to ensure we cover these expenses.



**Clergy and Lay Administrative/Maintenance Salary & Benefits:** The budget of \$727,626 includes the salary and benefits costs of our two priests, four full-time and seven part-time lay administrative and maintenance employees, and stipends for visiting priests. Benefits include healthcare and retirement costs and payroll-related taxes. Living expenses plus travel and retreat allowances are also included for our priests.

**Restoration Loan:** The parish borrowed \$6 million in 2009 to fund part of the restoration expenses for the church interior. We will make principal and interest payments of \$324,235 annually until the loan is paid off in March of next year.



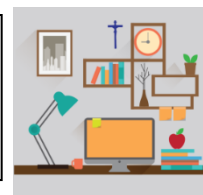
**Archdiocesan Assessments:** The Archdiocese funds its pastoral and administrative functions through an assessment on all Parishes equal to 8% of revenue. Our assessment this year is \$209,578. We also contribute \$42,423 for the capital needs of the Archdiocese. Additionally, we contribute \$244,000 annually to support elementary schools within the Global Regional School System of the Archdiocese.

**Music Ministry:** Our budget of \$209,185 funds the salaries and benefits of the Director and Assistant Director of Music, stipends for Cantors, musicians for special liturgies, upkeep of our organ, pianos & hand bells, purchase of music related supplies and equipment, and our Performing Arts at Xavier musical events.



**Maintenance, Repairs, and Utilities:** Our budget of \$107,500 covers our maintenance and repair expenses of \$62,000 and utilities expenses of \$45,500. Utilities include electricity used for lighting, powering office equipment and air conditioning, steam for heating, and telephone and internet services.

**Support Expenses (Non-Salary):** Our Support Expenses budget of \$142,500 covers a wide range of expenditures in support of church and back-office operations. These expenses include live streaming of Masses and Lessons and Carols, copier, printing, computer, postage, office supplies, flowers & decorations, liturgical & sacristy supplies, and fees paid to our parish accountant and FaithDirect.



**Religious Education and Youth Ministry Program:** Our budget includes our Family Faith and RCIA programs and our new Youth Ministry Program. The budget of \$166,916 covers the salary and benefits of our Director of Religious Education, stipends for the Youth Ministry Coordinator, catechists and guest speakers, books & supplies, and other program costs.

**Insurance:** To minimize any financial loss from a property damage or liability claim we purchase a wide variety of insurance policies. Our budget of \$85,000 includes the costs of our property, flood, earthquake, liability, employee dishonesty & crime, and equipment breakdown policies in addition to the retainer paid to our insurance consultant.



**Other Program Expenses:** The budget of \$144,400 includes expenses not covered above such as parish and special events, food & beverages, Stewardship Program, stipends for guest speakers and charitable contributions to other organizations.